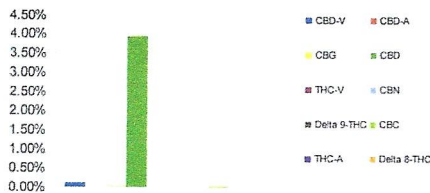




DESERT VALLEY TESTING  
 51 W. Weldon Ave  
 Phoenix, Arizona 85013  
 480-788-6644  
 www.desertvalleytesting.com

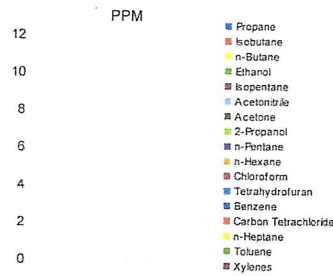
Sample Information		
Sample Identification	Kooodegras CBD 25mg Gelcaps	
Laboratory Number	2019010547	
Batch Number	12-3-0002	
Matrix	Capsule	
Analyzed Date	05/10/19	
Extraction Date	05/10/19	
Cannabinoid (HPLC)		
Compound	%	mg/g
CBD-V	0.11%	1.13
CBD-A	ND	ND
CBG	0.01%	0.09
CBD	3.94%	39.35
THC-V	ND	ND
CBN	ND	ND
Delta 9-THC	ND	ND
CBC	0.02%	0.18
THC-A	ND	ND
Delta 8-THC	ND	ND
Cannabinoids Total		
Max Active THC	ND	ND
Max Active CBD	3.94%	39.35
T. Active Cannabinoids	4.08%	40.76
Total Cannabinoids	4.08%	40.76
Max Active Ratios		
NA:1 CBD to THC		
ND:1 THC to CBD		

**Cannabinoid %**



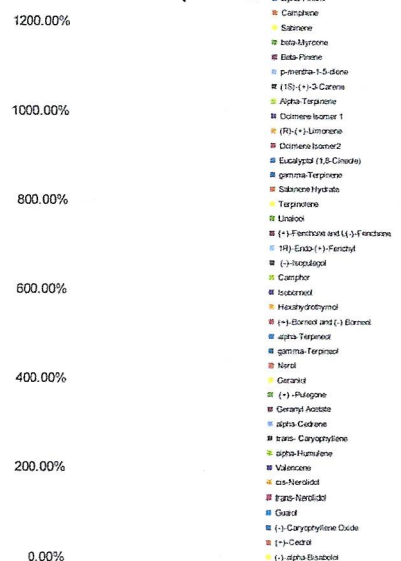
RS (GCMS-MS)	PPM	RL
Compound		
Propane	NT	5.0
Isobutane	NT	5.0
n-Butane	NT	5.0
Ethanol	NT	5.0
Isopentane	NT	5.0
Acetonitrile	NT	5.0
Acetone	NT	50.0
2-Propanol	NT	5.0
n-Pentane	NT	5.0
n-Hexane	NT	5.0
Chloroform	NT	5.0
Tetrahydrofuran	NT	5.0
Benzene	NT	5.0
Carbon Tetrachloride	NT	5.0
n-Heptane	NT	5.0
Toluene	NT	5.0
Xylenes	NT	10.0

**Residuals**



Terpene (GC-MS)	%	mg/g
Compound		
alpha-Pinene	NT	NT
Camphene	NT	NT
Sabinene	NT	NT
beta-Myrcene	NT	NT
Beta-Pinene	NT	NT
p-mentha-1-5-diene	NT	NT
(1S)-(+)-3-Carene	NT	NT
Alpha-Terpinene	NT	NT
Ocimene Isomer 1	NT	NT
(R)-(+)-Limonene	NT	NT
Ocimene Isomer2	NT	NT
Eucalyptol (1,8-Cineole)	NT	NT
gamma-Terpinene	NT	NT
Sabinene Hydrate	NT	NT
Terpinolene	NT	NT
Linalool	NT	NT
(+)-Fenchone and L(-)-Fenchone	NT	NT
1R)-Endo-(+)-Fenchyl	NT	NT
(-)-Isopulegol	NT	NT
Camphor	NT	NT
Isoborneol	NT	NT
Hexahydrothymol	NT	NT
(+)-Borneol and (-) Borneol	NT	NT
alpha-Terpineol	NT	NT
gamma-Terpineol	NT	NT
Nerol	NT	NT
Geraniol	NT	NT
(+) -Pulegone	NT	NT
Geranyl Acetate	NT	NT
alpha-Cedrene	NT	NT
trans-Caryophyllene	NT	NT
alpha-Humulene	NT	NT
Valencene	NT	NT
cis-Nerolidol	NT	NT
trans-Nerolidol	NT	NT
Guaiol	NT	NT
(-)-Caryophyllene Oxide	NT	NT
(+)-Cedrol	NT	NT
(-)-alpha-Bisabolol	NT	NT
<b>Total Terpenes</b>	NT	NT

**Terpenes %**



<b>g/capsule</b>	0.65
<b>mg THC/capsule</b>	ND
<b>mg CBD/capsule</b>	29.40
<b>(mg) total cannabinoids/capsule</b>	26.30

Metals	PPM	RL
Compound		
Lead	NT	0.010
Arsenic	NT	0.010
Cadmium	NT	0.010
Mercury	NT	0.001

RL=Reporting Limit  
 NA=Not Applicable  
 NT=Not Tested  
 ND=Non Detected

**Sample Image**



Micro Visual: NT

Percent Moisture  
 NT

Chemist: JG  
 Report Expires: 06/10/19

