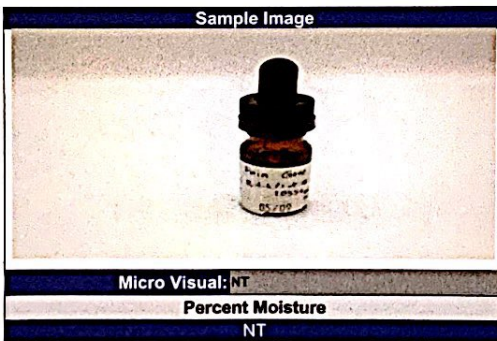
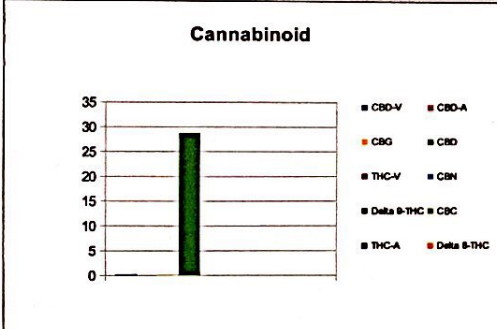


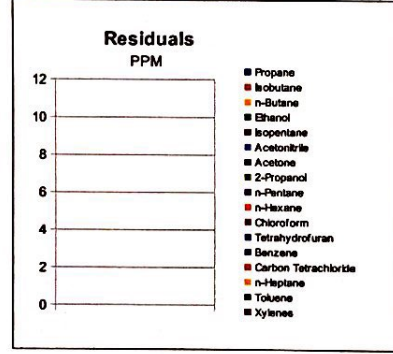
DESERT VALLEY TESTING
 51 W. Weldon Ave
 Phoenix, Arizona 85013
 480-788-6644
 www.desertvalleytesting.com

| Sample Information | | |
|------------------------|--------------------------|-----------|
| Sample Identification | Koodegras Pain Gone Bomb | |
| Laboratory Number | 2019010554 | |
| Batch Number | 2-1-0002 | |
| Matrix | Topical | |
| Analyzed Date | 05/10/19 | |
| Extraction Date | 05/10/19 | |
| Cannabinoid (HPLC) | mg/mL | mg/Bottle |
| Compound | | |
| CBD-V | 0.24 | NA |
| CBD-A | ND | NA |
| CBG | 0.08 | NA |
| CBD | 28.78 | NA |
| THC-V | ND | NA |
| CBN | ND | NA |
| Delta 9-THC | ND | NA |
| CBC | ND | NA |
| THC-A | ND | NA |
| Delta 8-THC | ND | NA |
| Cannabinoids Total | | |
| Max Active THC | ND | NA |
| Max Active CBD | 28.78 | NA |
| T. Active Cannabinoids | 29.11 | NA |
| Total Cannabinoids | 29.11 | NA |

| Max Active Ratios | | |
|-------------------|--|--|
| NA:1 CBD to THC | | |
| ND:1 THC to CBD | | |



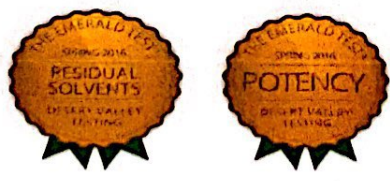
| RS (GCMS-HS) | PPM | RL |
|----------------------|-----|------|
| Compound | | |
| Propane | NT | 5.0 |
| Isobutane | NT | 5.0 |
| n-Butane | NT | 5.0 |
| Ethanol | NT | 5.0 |
| Isopentane | NT | 5.0 |
| Acetonitrile | NT | 5.0 |
| Acetone | NT | 50.0 |
| 2-Propanol | NT | 5.0 |
| n-Pentane | NT | 5.0 |
| n-Hexane | NT | 5.0 |
| Chloroform | NT | 5.0 |
| Tetrahydrofuran | NT | 5.0 |
| Benzene | NT | 5.0 |
| Carbon Tetrachloride | NT | 5.0 |
| n-Heptane | NT | 5.0 |
| Toluene | NT | 5.0 |
| Xylenes | NT | 10.0 |



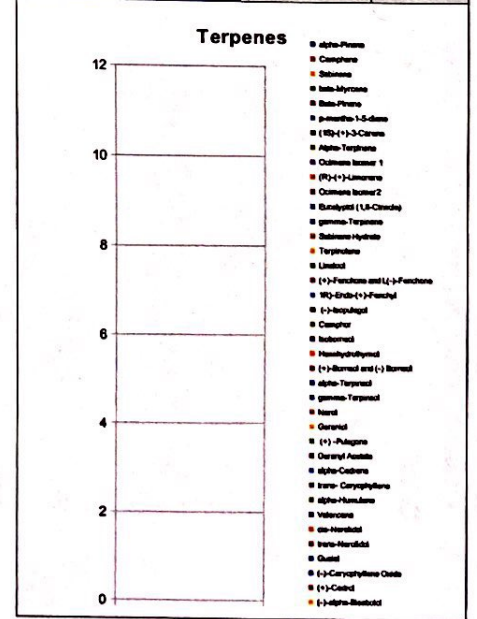
| | |
|--------------------------------|----|
| mL/Bottle | NA |
| mg THC/Bottle | NA |
| mg CBD/Bottle | NA |
| (mg) total cannabinoids/bottle | NA |

| Metals | PPM | RL |
|----------|-----|-------|
| Compound | | |
| Lead | NT | 0.010 |
| Arsenic | NT | 0.010 |
| Cadmium | NT | 0.010 |
| Mercury | NT | 0.001 |

RL=Reporting Limit
 NA=Not Applicable
 NT=Not Tested
 ND=Non Detected



| Terpene (GC-MS) | mg/mL | mg/Bottle |
|--------------------------------|-------|-----------|
| Compound | | |
| alpha-Pinene | NT | NT |
| Camphene | NT | NT |
| Sabinene | NT | NT |
| beta-Myrcene | NT | NT |
| Beta-Pinene | NT | NT |
| p-mentha-1-5-diene | NT | NT |
| (1S)-(+)-3-Carene | NT | NT |
| Alpha-Terpinene | NT | NT |
| Ocimene Isomer 1 | NT | NT |
| (R)-(+)-Limonene | NT | NT |
| Ocimene Isomer2 | NT | NT |
| Eucalyptol (1,8-Cineole) | NT | NT |
| gamma-Terpinene | NT | NT |
| Sabinene Hydrate | NT | NT |
| Terpinolene | NT | NT |
| Linalool | NT | NT |
| (+)-Fenchone and L(-)-Fenchone | NT | NT |
| 1R)-Endo-(+)-Fenchyl | NT | NT |
| (-)-Isopulegol | NT | NT |
| Camphor | NT | NT |
| Isoborneol | NT | NT |
| Hexahydrothymol | NT | NT |
| (+)-Borneol and (-) Borneol | NT | NT |
| alpha-Terpineol | NT | NT |
| gamma-Terpineol | NT | NT |
| Nerol | NT | NT |
| Geraniol | NT | NT |
| (+) -Pulegone | NT | NT |
| Geranyl Acetate | NT | NT |
| alpha-Cedrene | NT | NT |
| trans- Caryophyllene | NT | NT |
| alpha-Humulene | NT | NT |
| Valencene | NT | NT |
| cis-Nerolidol | NT | NT |
| trans-Nerolidol | NT | NT |
| Guaiol | NT | NT |
| (-)-Caryophyllene Oxide | NT | NT |
| (+)-Cedrol | NT | NT |
| (-)-alpha-Bisabolol | NT | NT |
| Total Terpenes | NT | NT |



Chemist: JG
 Report Expires: 06/10/19

Reported on 05/13/2019
 Copyright © 2015 Desert Valley Testing