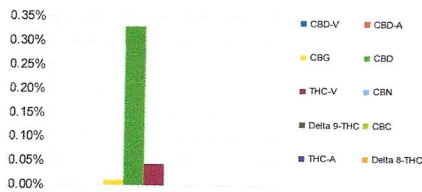


Sample Information		
Sample Identification	No. 9 Quick Relief Salve	
Laboratory Number	2019011835	
Batch Number	2-2-0002	
Matrix	Topical	
Analyzed Date	05/28/19	
Extraction Date	05/28/19	
Cannabinoid (HPLC)		
Compound	%	mg/g
CBD-V	ND	ND
CBD-A	ND	ND
CBG	0.01%	0.10
CBD	0.33%	3.29
THC-V	0.04%	0.44
CBN	ND	ND
Delta 9-THC	ND	ND
CBC	ND	ND
THC-A	ND	ND
Delta 8-THC	ND	ND
Cannabinoids Total		
Max Active THC	ND	ND
Max Active CBD	0.33%	3.29
T. Active Cannabinoids	0.38%	3.83
Total Cannabinoids	0.38%	3.83
Max Active Ratios		
NA:1 CBD to THC		
ND:1 THC to CBD		

Cannabinoid %



Sample Image



Micro Visual: NT

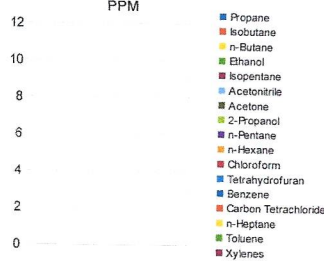
Percent Moisture
NT

Chemist: JG
 Report Expires: 08/27/19

RL=Reporting Limit
 NA=Not Applicable
 NT=Not Tested
 ND=Non Detected
 TNTC=Too Numerous to Count

RS (GCMS-MS)	PPM	RL
Compound		
Propane	NT	5.0
Isobutane	NT	5.0
n-Butane	NT	5.0
Ethanol	NT	5.0
Isopentane	NT	5.0
Acetonitrile	NT	5.0
Acetone	NT	50.0
2-Propanol	NT	5.0
n-Pentane	NT	5.0
n-Hexane	NT	5.0
Chloroform	NT	5.0
Tetrahydrofuran	NT	5.0
Benzene	NT	5.0
Carbon Tetrachloride	NT	5.0
n-Heptane	NT	5.0
Toluene	NT	5.0
Xylenes	NT	10.0

Residuals



g/container

56.70

mg THC/container

ND

mg CBD/container

186.70

(mg) total cannabinoids/container

217.17

Metals	PPM	RL
Compound		
Lead	NT	0.018
Arsenic	NT	0.007
Cadmium	NT	0.004
Mercury	NT	0.020

Microbial	CFU/g
Compound	
Enterobacteriaceae	NT
Coliform	NT
Ecoli	NT
Aerobic	NT
Yeast	NT
Mold	NT



Terpene (GC-MS)	%	mg/g
Compound		
alpha-Pinene	NT	NT
Camphene	NT	NT
Sabinene	NT	NT
beta-Myrcene	NT	NT
Beta-Pinene	NT	NT
p-mentha-1-5-diene	NT	NT
(1S)-(+)-3-Carene	NT	NT
Alpha-Terpinene	NT	NT
Ocimene Isomer 1	NT	NT
(R)-(+)-Limonene	NT	NT
Ocimene Isomer2	NT	NT
Eucalyptol (1,8-Cineole)	NT	NT
gamma-Terpinene	NT	NT
Sabinene Hydrate	NT	NT
Terpinolene	NT	NT
Linalool	NT	NT
(+)-Fenchone and L(-)-Fenchone	NT	NT
1R)-Endo-(+)-Fenchyl	NT	NT
(-)-Isopulegol	NT	NT
Camphor	NT	NT
Isoborneol	NT	NT
Hexahydrothymol	NT	NT
(+)-Borneol and (-) Borneol	NT	NT
alpha-Terpineol	NT	NT
gamma-Terpineol	NT	NT
Nerol	NT	NT
Geraniol	NT	NT
(+) -Pulegone	NT	NT
Geranyl Acetate	NT	NT
alpha-Cedrene	NT	NT
trans- Caryophyllene	NT	NT
alpha-Humulene	NT	NT
Valencene	NT	NT
cis-Nerolidol	NT	NT
trans-Nerolidol	NT	NT
Guaiol	NT	NT
(-)-Caryophyllene Oxide	NT	NT
(+)-Cedrol	NT	NT
(-)-alpha-Bisabolol	NT	NT
Total Terpenes	NT	NT

Terpenes %

